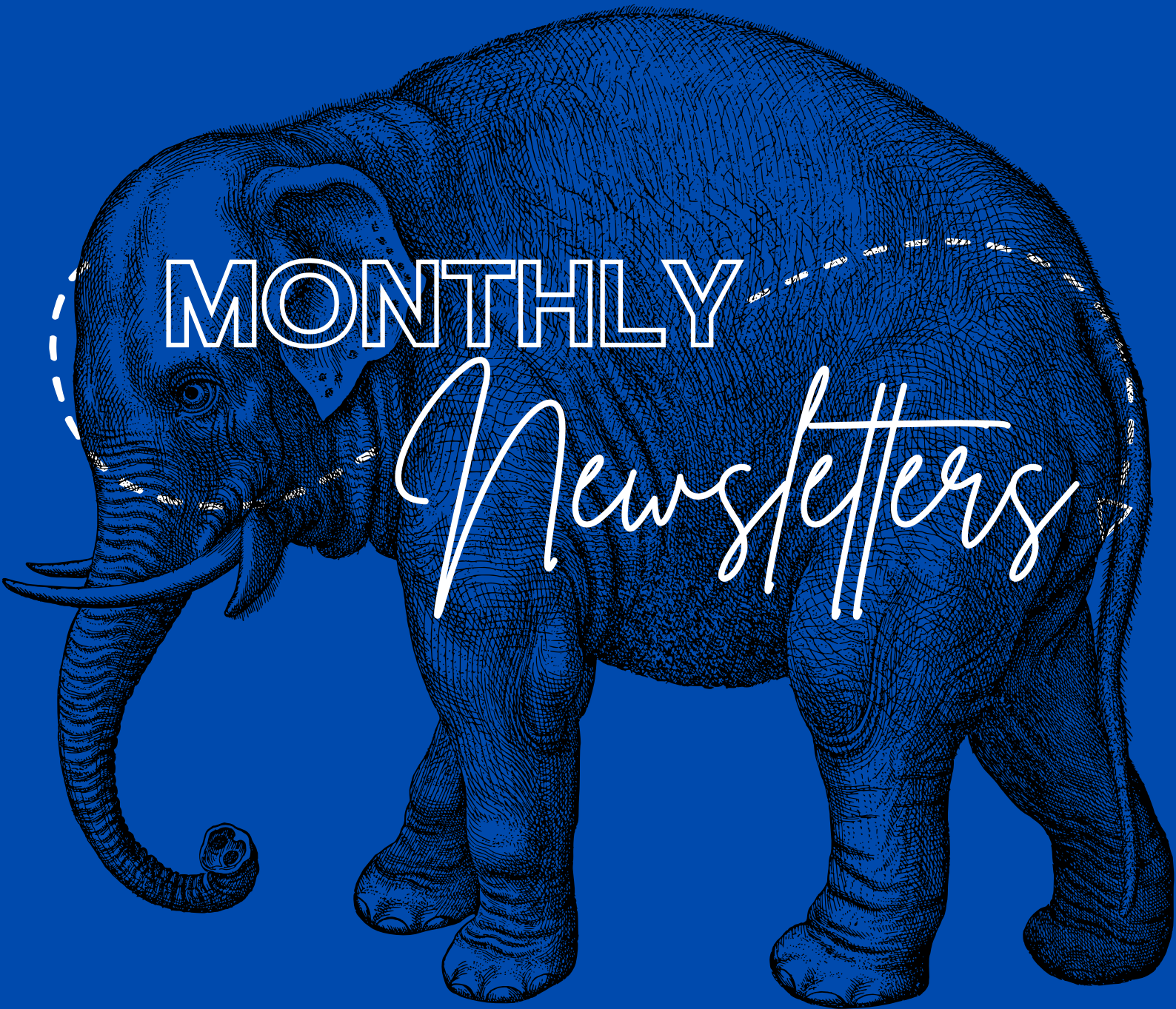


J A N U A R Y 2 0 2 6



MONTHLY

Newsletters

# Project Highlights

## S T R E N G T H E N I N G   S A N I T A T I O N   T O   I M P R O V E S A F E T Y   |   U N D E R   V H C   P R O J E C T

In the forest-fringe villages surrounding Bannerghatta National Park, access to basic sanitation remains a serious challenge, particularly for women. Across the 72 villages that share boundaries with the park, many households still lack toilets, forcing women to enter nearby forests to relieve themselves during early mornings or late nights. This exposes them to risks such as encounters with wildlife, snakebites, health complications, and constant fear, undermining their safety, dignity, and well-being—an issue that often remains invisible in conservation conversations.

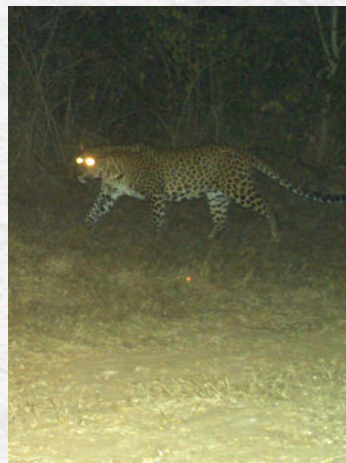
Recognising this gap, A Rocha India has been working closely with forest-fringe communities through its village health and hygiene programmes, focusing on community-led and sustainable sanitation solutions. With support from the Government of India's Swachh Bharat Mission, model bath-attached toilets were constructed to demonstrate safe and dignified alternatives. The response was immediate: following the construction of three model toilets, 36 households around the Kodihalli Wildlife Range expressed demand for similar facilities, leading to further support from TVS-SST. By improving sanitation access, A Rocha India is strengthening community health and dignity while also reducing risky human-wildlife interactions, contributing to safer and more harmonious coexistence.



## C A M E R A   T R A P P I N G   I N   H A R O H A L L I   R A N G E |   W I L D L I F E   M O N I T O R I N G   P R O J E C T

As part of A Rocha India's ongoing Wildlife Monitoring Project, camera trapping activities have now expanded into the Harohalli Range, building on insights gained from the earlier survey in Kodihalli. Strategically placed camera traps across forest patches and movement corridors in Harohalli are helping document species presence, activity patterns, and habitat use. This non-invasive monitoring is particularly valuable for recording elusive and nocturnal wildlife, offering a clearer picture of biodiversity within this ecologically important landscape.

The Harohalli survey marks a critical step toward understanding wildlife movement across connected forest ranges. Following this phase, monitoring efforts will further expand into the Anekal Range, enabling a landscape-level assessment of wildlife distribution and connectivity. The data generated will support informed conservation planning, help identify emerging human-wildlife conflict zones, and guide long-term strategies for habitat protection and sustainable coexistence between communities and wildlife.



# Project Highlights

## CORRIDOR MONITORING | NORTH CAUVERY WILDLIFE SANCTUARY

A recent field survey conducted in the North Cauvery Wildlife Sanctuary is focused on understanding how mammals use a key potential wildlife corridor that connects fragmented habitats across the landscape. Such corridors play a critical role in enabling animal movement, maintaining genetic diversity, and reducing the pressures that arise when wildlife is forced into smaller, isolated patches. Confirming the use of this corridor will help strengthen the scientific basis for future conservation action and provide evidence that can support long-term planning and policy decisions in the region.

To document wildlife presence and movement, the survey relies on indirect field methods that allow researchers to understand animal use without causing disturbance. These include systematic sign surveys and camera trapping carried out across forest zones, potential corridor areas, and adjoining human-dominated landscapes. By working across this gradient, the study aims to capture how mammals move between relatively undisturbed habitats and areas shaped by human activity, offering insights into both connectivity and conflict-prone zones.

So far, 50 survey grids have been completed, covering a diverse mix of terrain and land-use types. In addition to recording animal signs, the team is documenting anthropogenic factors, vegetation structure, and the availability of key food species within each grid. These layers of information help place wildlife movement in a broader ecological and social context, highlighting how habitat features and human pressures influence corridor use. Together, the findings from this survey will contribute to a more nuanced understanding of landscape connectivity and support efforts to balance conservation priorities with the realities of shared spaces.



## Special highlights

### A ROCHA INDIA - MOUNT CARMEL COLLEGE PARTNERSHIP FOR CONSERVATION LEARNING

We are pleased to formalise a new academic-field collaboration between A Rocha India and Mount Carmel College, Autonomous, Bengaluru through the signing of a Memorandum of Understanding. This partnership bridges classroom learning with living landscapes, creating opportunities for internships, field-based research, training workshops, and community-centred conservation initiatives.

A key focus of this collaboration is strengthening postgraduate engagement, particularly through the MSc in Wildlife & Conservation Science, by embedding students in real-world conservation science, ecological monitoring, and applied fieldwork. Together, we aim to nurture the next generation of conservation professionals grounded in scientific rigor, ethical practice, and on-ground realities transforming learning from the laboratory to the landscape.

